

MAG 50 Series

MPI Test Bench Unit

The MAG 50 series of test bench units are heavy-duty machines designed for the inspection of ferrous components. There are numerous options in both ranges and all units come with separate power packs and stainless steel tanks.



PRODUCT PROPERTIES

Demagnetisation	Decaying AC
Typical duty cycle	1.5 seconds 'ON', 15 seconds 'OFF'
Mains electricity supply	380 or 415 Volts, 50 Hz, 1 Ph
Current control	Infinitely variable
Magnetising coil	300, 400, 500 and 625 mm (other sizes available on request)
Compressed air line	Minimum 5 bar (customer to provide regulator)
Supplied with:	<ul style="list-style-type: none"> • Digital Ammeter • Hand-Crank Tailstock Adjustment • Controlled Break Circuitry • Infinitely Variable Thyristor • Ink Tank Grille (Front) • Head & Coil Switchable Contactors

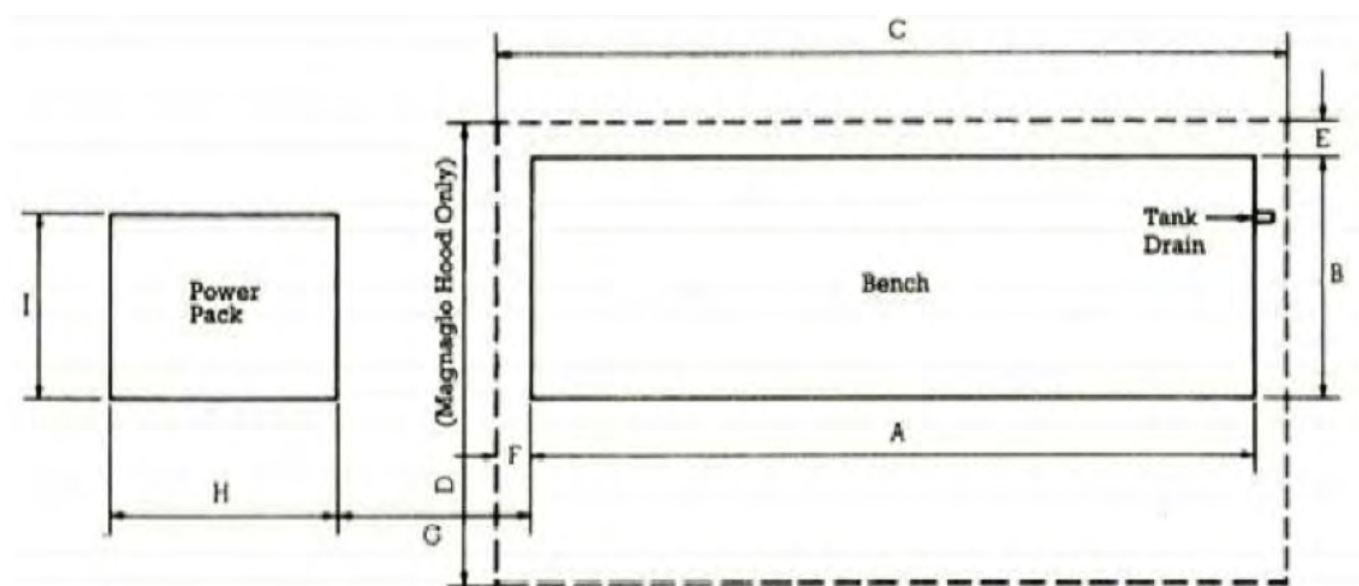
SPECIFICATIONS

Product designation	Maximum output current	Line current draw for duration of maximum current shot	Component length (max.)	Part number
MAG 50/3H/15	3,000 Amps and Half Wave DC	170 Amps	1.5 m	007E224
MAG 50/3H/20	3,000 Amps and Half Wave DC	170 Amps	2.0 m	007E225
MAG 50/3H/25	3,000 Amps and Half Wave DC	170 Amps	2.5 m	007E226
MAG 50/5H/15	5,000 Amps and Half Wave DC	270 Amps	1.5 m	007E228
MAG 50/5H/20	5,000 Amps and Half Wave DC	270 Amps	2.0 m	007E229
MAG 50/5H/25	5,000 Amps and Half Wave DC	270 Amps	2.5 m	007E230

All units carry the CE mark and conform to the appropriate EU directives.

DIMENSIONS

Unit	Max. component length (mm)	Dimensions (mm)									Tank height (mm)	Power pack height (mm)	Tank capacity
		A	B	C	D	E	F	G	H	I			
MAG 50/___/15	1,500	2,250	775	2,650	1,500	200	200	300	850	750	1,060	1,370	50 litres
MAG 50/___/20	2,000	2,820	775	3,220	1,500	200	200	300	850	750	1,060	1,370	60 litres
MAG 50/___/25	2,500	3,295	775	3,695	1,500	200	200	300	850	750	1,060	1,370	70 litres



OPTIONAL ACCESSORIES

Steady Rests

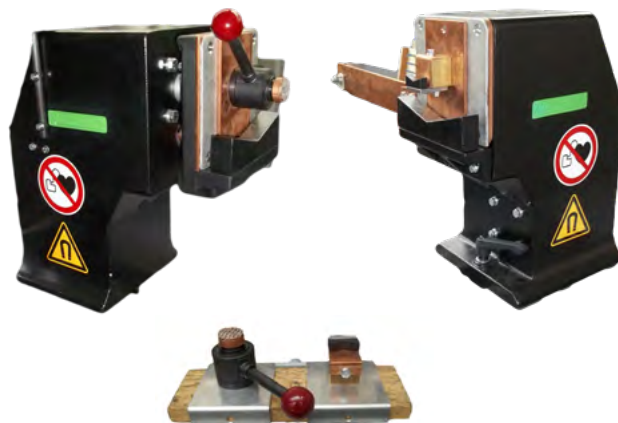


Headstock Steady Rest
Part number 20978A1



Bed-mounted Movable Steady Rest
Part number 20955A3

Small Parts Adaptor



Part number 030C009

Accessory	Part number(s)
Magnetic flow (flux) heads	on request
Magnaglo hood	011H018, 011H019, 011H020
Air pressure regulator & gauge	004P144
Rear grilles	007G019, 007G020, 007G021